

ELECTROMECHANICAL SWITCH

ELECTROMECHANICAL SPDT (ES) OR DPDT (ED) DRY CONTACT SWITCH NC/NO. SNAP ACTION CONTACT WILL CHANGE STATUS WHEN THE CAM WILL PUSH THE LEVER.

 AVAILABLE WITH RATING 250 VAC 0,1 - 5A 24 VDC 0,1A - 5A SILVER OR GOLD PLATED CONTACT APPROVED TO BE USED WHERE IS REQUIRED SIL IEC61508



ES switch SPDT



ES 01 SPDT switch

Contact type.....SPDT snap action switch
 Housing material.....Technopolymer
 Contact seal.....not sealed
 Temperature range-40°C to +105°C
 Contact material.....Silver plated
 Contact rating.....5A@24VDC - 5A@250VAC

ES 07 SPDT IP67 switch



Contact type.....SPDT snap action switch
 Housing material.....Technopolymer
 Contact seal.....Hermetically sealed IP67
 Temperature range-40°C to +105°C
 Contact material.....Silver plated
 Contact rating.....5A@24VDC - 5A@250VAC

ES 06 SPDT low temperature switch



Contact type.....SPDT snap action switch
 Housing material.....Technopolymer LT
 Contact seal.....not sealed
 Temperature range-60°C to +85°C
 Contact material.....Silver plated
 Contact rating.....5A@24VDC - 5A@250VAC

ES 02 SPDT gold plated IP67 switch



SUITABLE FOR EX IA



Contact type.....SPDT snap action switch
 Housing material.....Technopolymer
 Contact seal.....Hermetically sealed IP67
 Temperature range-40°C to +105°C
 Contact material.....Gold plated
 Contact rating.....0,1A@24VDC - 0,1A@250VAC

ES 03 SPDT gold plated low temperature switch



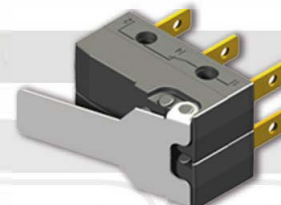
SUITABLE FOR EX IA



Contact type.....SPDT snap action switch
 Housing material.....Technopolymer LT
 Contact seal.....not sealed
 Temperature range-60°C to +85°C
 Contact material.....Gold plated
 Contact rating.....0,1A@24VDC - 0,1A@250VAC

ELECTROMECHANICAL SWITCH ES/ED CAN BE USED IN ATEX/IECEX HAZARDOUS AREA ZONE 1 AND 2. GOLD PLATED SWITCH MUST BE USED FOR EX IA INTRINSICALLY - RATING LIMITATION AT 16V 76 mA. (PLEASE REFER TO GI SERIES PRODUCTS CERTIFICATE).

ED switch DPDT



ED 20 DPDT switch

Contact type.....DPDT snap action switch
 Housing material.....Technopolymer
 Contact seal.....not sealed
 Temperature range-40°C to +105°C
 Contact material.....Silver plated
 Contact rating.....5A@24VDC - 5A@250VAC

ED 21 DPDT IP67 switch



Contact type.....DPDT snap action switch
 Housing material.....Technopolymer
 Contact seal.....Hermetically sealed IP67
 Temperature range-40°C to +105°C
 Contact material.....Silver plated
 Contact rating.....5A@24VDC - 5A@250VAC

ED 22 DPDT gold plated switch



SUITABLE FOR EX IA



Contact type.....DPDT snap action switch
 Housing material.....Technopolymer
 Contact seal.....not sealed
 Temperature range-40°C to +105°C
 Contact material.....Gold plated
 Contact rating.....0,1A@24VDC - 0,1A@250VAC

ED 23 DPDT gold plated IP67 switch

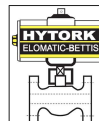


SUITABLE FOR EX IA



Contact type.....DPDT snap action switch
 Housing material.....Technopolymer
 Contact seal.....Hermetically sealed IP67
 Temperature range-40°C to +105°C
 Contact material.....Gold plated
 Contact rating.....0,1A@24VDC - 0,1A@250VAC

Data sheet ES/ED01-16 All content contained herein is subject to change without notice



04 50 66 70 42
 Info@Mecatork.fr